

*'A palace of pleasure and imagination around which the people may place their affections and which may give them a home on which their memory may rest'*

Lord Roseberry at the opening ceremony,  
22 January 1898

The People's Palace and Winter Gardens were built in 1898 on historic Glasgow Green for the benefit of the industrial working people of the east end.

Today the People's Palace is Glasgow's social history museum and tells the story of the people and city from 1750 to the present day.

The second floor has three displays. *Visions of the City* features Glasgow artist Ken Currie's history cycle. In *Housing in Glasgow* you can visit the single end and try, as many Glaswegians have, to *Make Ends Meet*. *Working City* shows off products from Glasgow, the second city of the Empire, and tells you about the lives of people working in the yards, factories, shops, offices and theatres – you can also see Billy Connolly's wacky banana boots!

The first floor takes you out *Doon the Watter* and to the *Dancing*. *The Bevvie* and *Crime* displays reveal other aspects of Glasgow history and life. In *War*, *The Steamie* and *The Buttercup Dairy* you can sit in an Anderson air raid shelter, do the washing and buy your groceries...and before you leave, enjoy a bit of the *Glasgow Patter*.

Check out the exhibition gallery and museum shop on the ground floor and enjoy the exotic palms and planting and café in the adjacent Winter Gardens.

In addition to the displays inside, there's lots to see and enjoy outside:

- ♦ the spectacular Doulton Fountain - the largest terracotta fountain in the world - gifted to Glasgow by Henry Doulton in 1888 and now restored to its original glory;
- ♦ the Green Garden with its historic artefacts and sculptures;
- ♦ historic Glasgow Green, where James Watt was inspired to invent the steam engine!

#### **Gift shop**

The museum shop has a great range of gifts – from Glasgow local and social history publications to art prints, postcards and greeting cards.

#### **Café**

The café in the Winter Gardens offers an appetizing menu including a variety of hot and cold dishes and drinks. It is open daily from 10 a.m. to 4.15 p.m.

#### **Exhibitions and events**

Please ask about current exhibitions and events, pick up a copy of *Preview* magazine or log on to [www.glasgowmuseums.com](http://www.glasgowmuseums.com)

#### **Schools and groups**

For information on schools and community education and access programmes please ask a member of staff or call the Museum Education Service on 0141 276 9505/9506.

#### **Toilets**

There are toilets in the Winter Gardens, and a disabled toilet in the People's Palace.

#### **Venue hire**

Please phone Encore on 0141 353 9148/9108 for details.

#### **Have your say!**

We welcome your comments. Give us your views on a *Your Views Count* comments slip, available at Reception.

#### **How to get here**

First Bus services: 16, 18, 40, 61, 62, 64, 203, 263.  
Train stations: Argyle Street, Bellgrove and High Street.  
Subway station: St Enoch.  
There is free parking nearby and designated disabled driver parking to the side of the main entrance.

The People's Palace and Winter Gardens is one of 13 museums run by Glasgow City Council, Cultural and Leisure Services. For more information visit our website [www.glasgowmuseums.com](http://www.glasgowmuseums.com)

#### **People's Palace and Winter Gardens**

Glasgow Green, Glasgow G40 1AT  
Open daily 10 a.m. – 5 p.m.,  
except Friday and Sunday 11 a.m. – 5 p.m.  
Phone 0141 271 2951  
Fax 0141 271 2960  
[www.glasgowmuseums.com](http://www.glasgowmuseums.com)

©2005 Glasgow City Council (Museums)

Supported by the  
Heritage Lottery Fund



# How to find your way around the **PEOPLE'S PALACE** & Winter Gardens



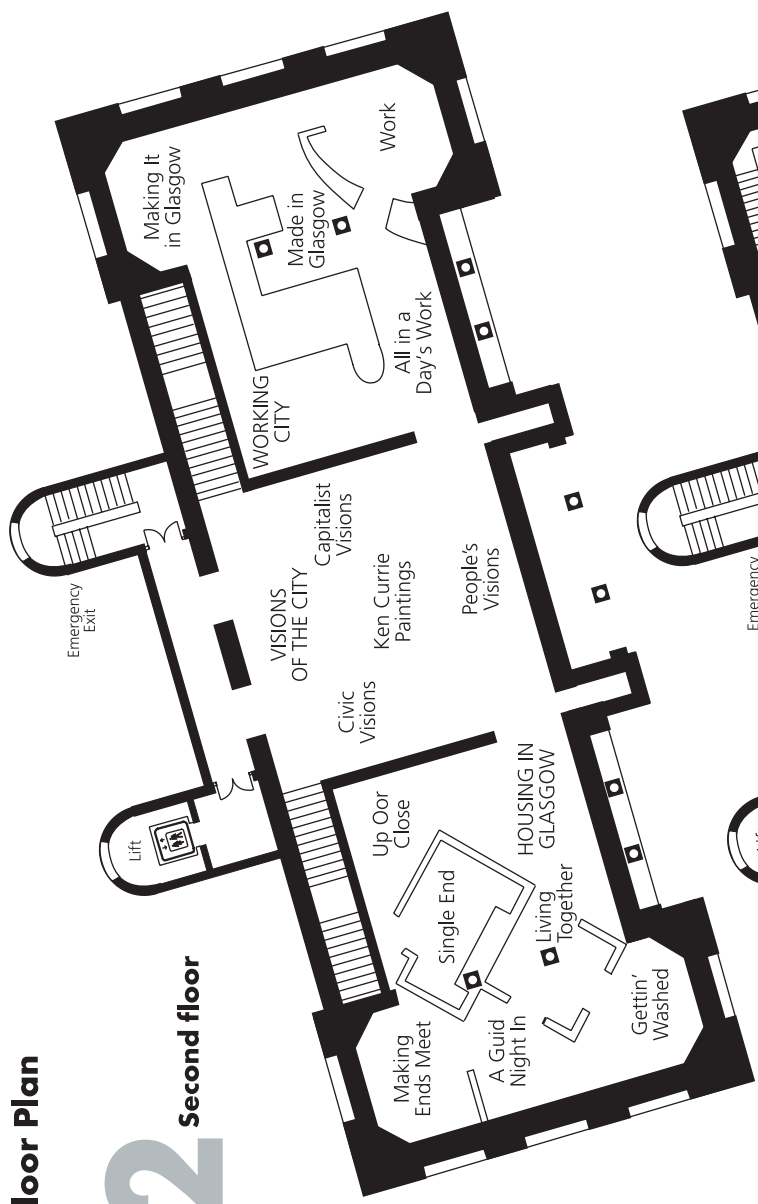
**Open daily**  
**Free admission**



# Floor Plan

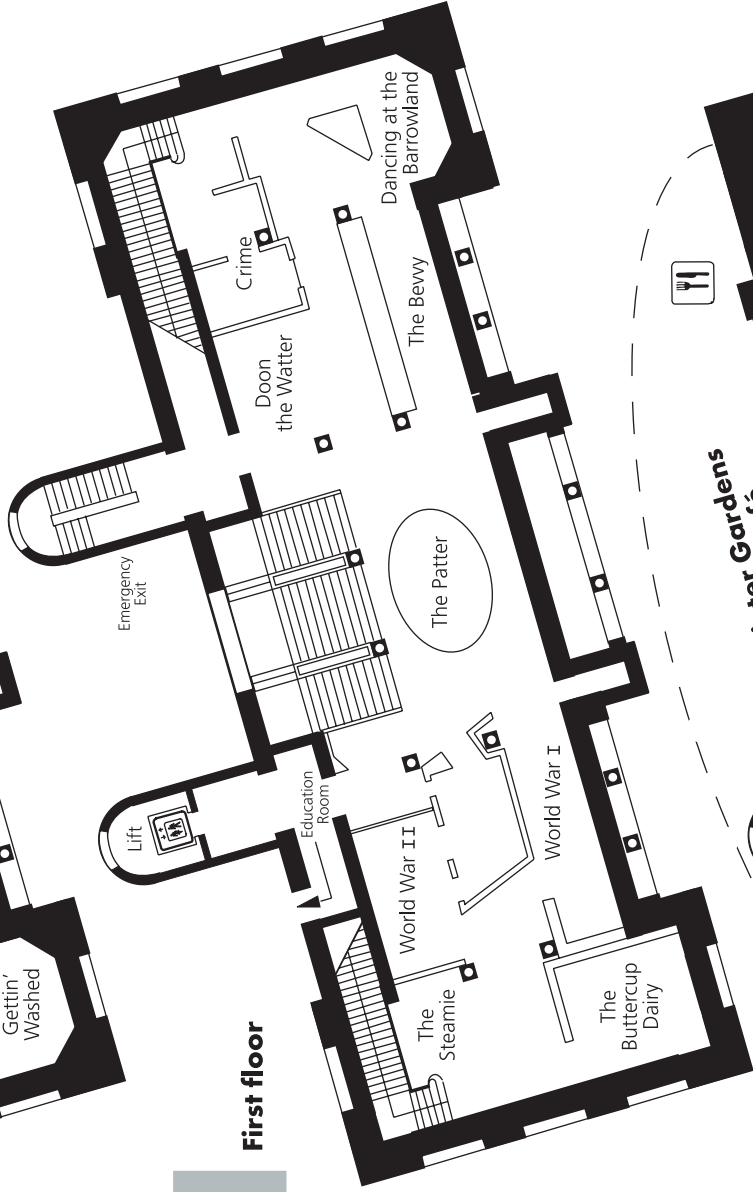
## 2

### Second floor



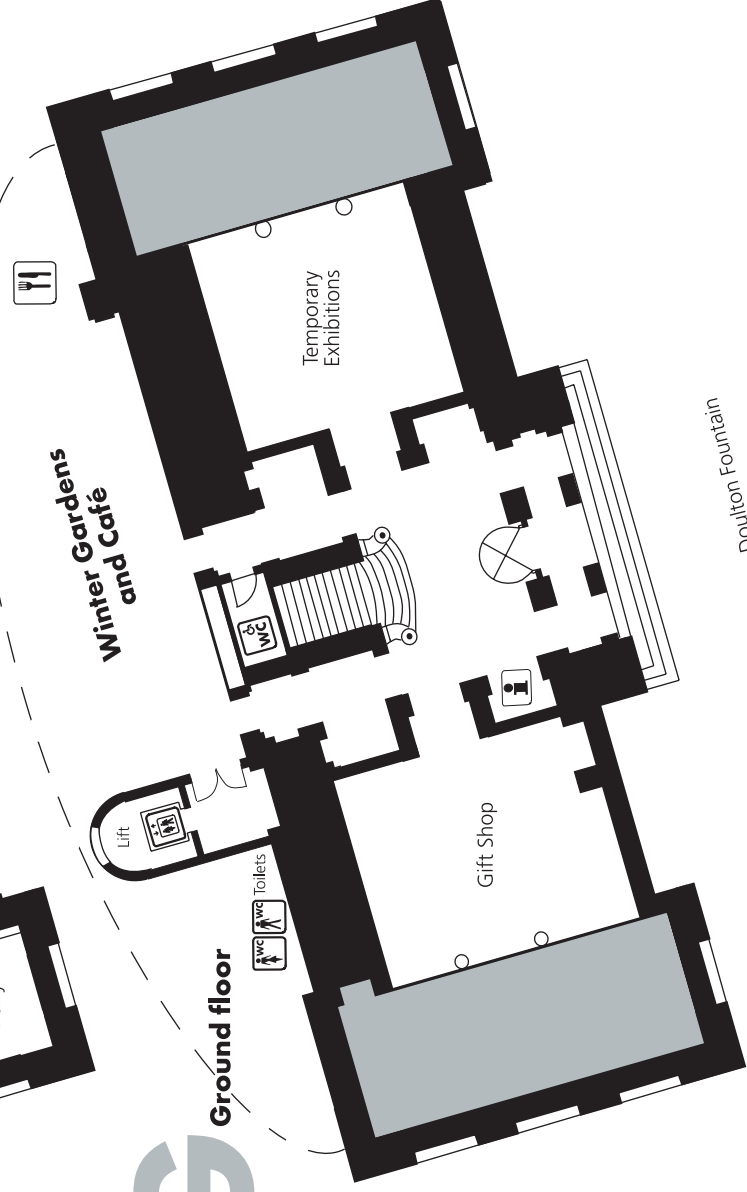
## 1

### First floor



## G

### Ground floor



Doulton Fountain